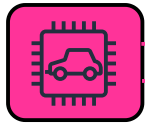


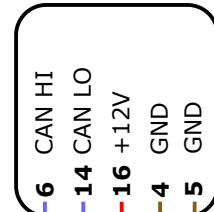
Car/ECU  
CAN-Bus



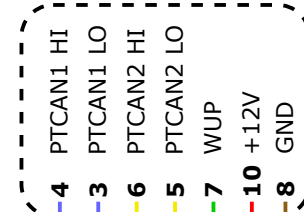
**CAN-Bus termination**  
CAN1 & CAN2 are internally terminated (120 ohm).  
CAN3 is **not** internally terminated.

**CAN-Bus wiring**  
should be done using **twisted-pair** wires to minimize interference.

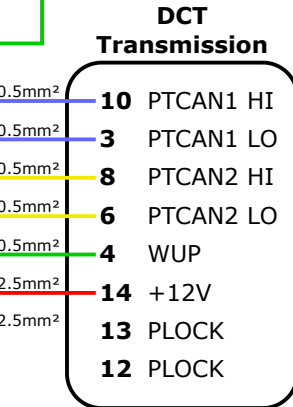
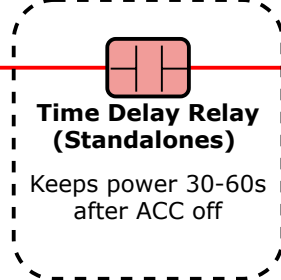
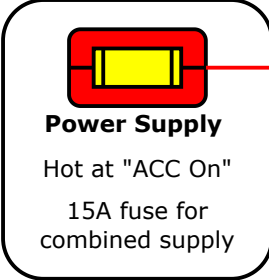
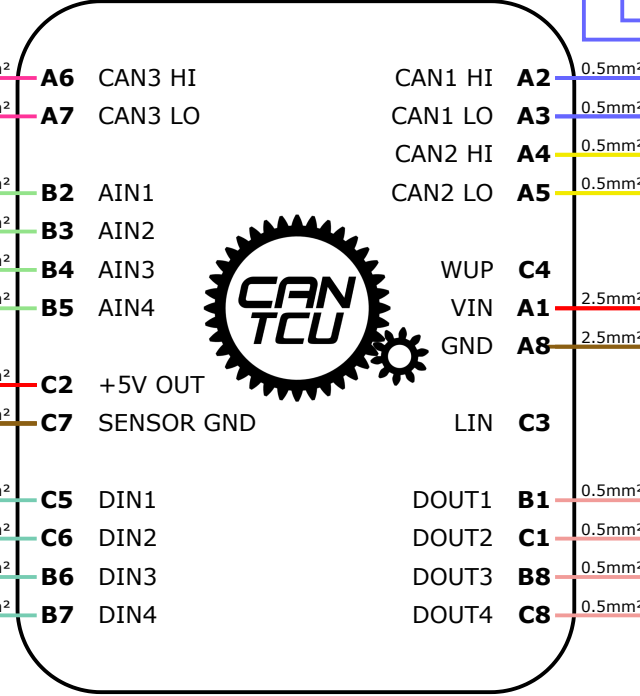
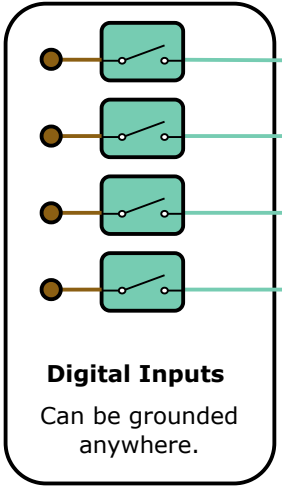
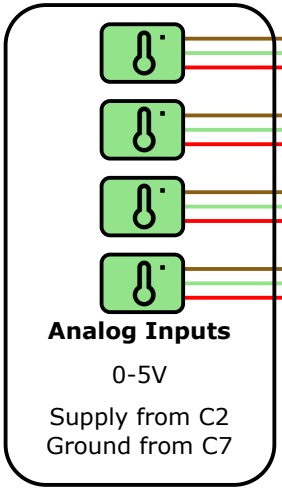
**OBD Connector**



**DCT Shifter (Optional)**



**WUP Source**  
WUP is a +12V signal only when IGN ON.  
Can be taken from car IGN, car WUP, or a CANTCU Relay output.



GND on transmission casing

